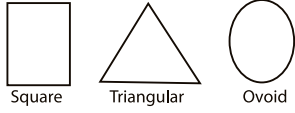


Mould Chart

 **REBi** TEETH

-AKRİLİK DİŞ-

acrylic & compozite teeth manufacturing



E1  (1) 43.3
(2) 8.7
(3) 10.4
(4) 8.1

A11  (1) 41.5
(2) 8.6
(3) 10.0
(4) 8.1

E2  (1) 41.4
(2) 8.8
(3) 10.9
(4) 8.0

A12  (1) 45.1
(2) 8.5
(3) 10.4
(4) 8.6

E3  (1) 46.6
(2) 10.7
(3) 12.1
(4) 8.4

O13  (1) 41.5
(2) 9.3
(3) 10.0
(4) 7.7

E4  (1) 50.3
(2) 10.7
(3) 12.1
(4) 9.4

H4  (1) 43.8
(2) 9.0
(3) 11.4
(4) 8.0

E5  (1) 52.5
(2) 12.5
(3) 13.4
(4) 9.8

F4  (1) 48.8
(2) 10.4
(3) 12.5
(4) 8.6

G1  (1) 40.8
(2) 8.0
(3) 9.7
(4) 7.3

419  (1) 43.0
(2) 8.4
(3) 10.6
(4) 7.8

G2  (1) 44.5
(2) 9.2
(3) 10.5
(4) 8.2

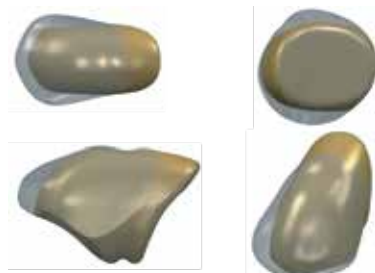
425  (1) 42.7
(2) 9.2
(3) 11.0
(4) 8.1

G3  (1) 44.8
(2) 9.8
(3) 11.6
(4) 8.2

426  (1) 43.0
(2) 8.4
(3) 10.9
(4) 7.9

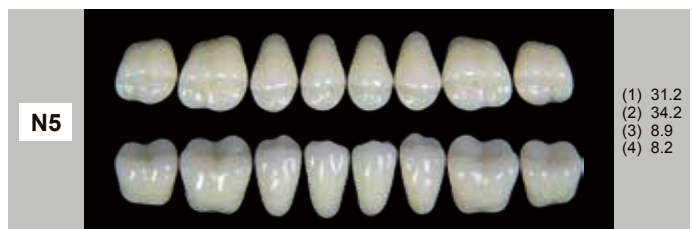
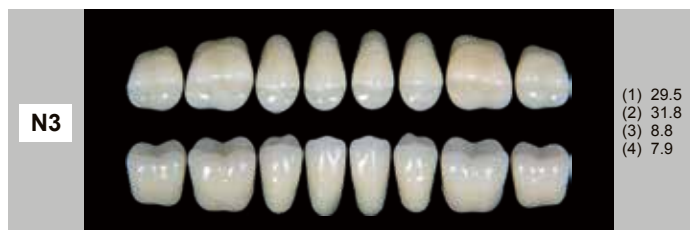
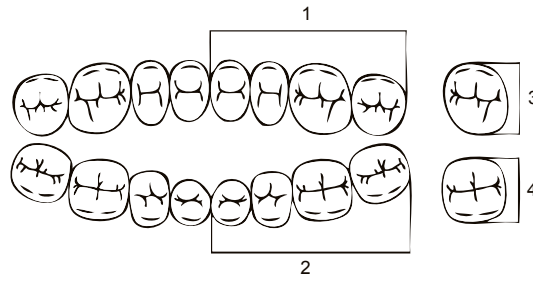
G4  (1) 48.3
(2) 9.3
(3) 11.8
(4) 8.7

448  (1) 45.8
(2) 9.3
(3) 11.0
(4) 8.3



Scala Colori - Shade Guide

Denture (Vita color)
A1 - A2 - A3 - A3,5 - A4
B1 - B2 - B3 - B4
C1 - C2 - C3 - C4
D2 - D3 - D4



Articulation table

Upper anteriors	Lower anteriors	Upper and lower posteriors
E 1	L 3	M 2
E 2	L 5	M 4
E 3	L 6	M 4
E 4	L 9	M 5
E 5	L 10	M 5
G 1	L 3	N 3
G 2	L 7	N 5
G 3	L 6	M 4
G 4	L 8	M 4

Articulation table

Upper anteriors	Lower anteriors	Upper and lower posteriors
A 11	L 3	N 3
A 12	L 5	N 5
O 13	L 3	N 3
H 4	L 5	N 5
F 4	L 9	M 5
419	L 3	N 3
425	L 5	N 5
426	L 7	M 2
448	L 8	N 5



AKRİLİK DİŞ

- İleri kalıp teknolojisi ve hassas bilgisayar kontrollü üç renkli kalıplar sayesinde doğal renk harmanı
- Doğal görünümlü mavi/beyaz opasite ve floresanlık
- Kaninler mezial daha koyu ve lateral daha yarı şeffaf
- Geniş kapsamlı ön ve arka grup kalıplar
- A1-D4 arasında 16 standart renkte canlılık
- Üstün fiziki özellikler
- Geliştirilmiş aşınma direnci
- Mükemmel renk tutarlılığı
- Plak oluşmasına dirençli
- Çözücülere dayanıklı
- Bütün akriliklere tutunma garantisi



ACRYLIC RESIN TEETH

- Natural colorblending through advanced tooling and precise computer-controls of three colored layers
- Naturally occurring blue/white opalescence and fluorescence
- Canines darker mesially and more translucent laterally
- A wide range of Anterior and posterior moulds
- Vitality across the 16 standard shades ranged A1-D4.
- Superior physical properties
- Improved abrasion resistance
- Excellent color stability
- Plaque adhesion resistance
- Solvent resistance
- Guaranteed bonding to all denture bases



2292

EN ISO 13485:2003



Pınar Mahallesi Dış Budak Sokak No 49
Sarıyer - İstanbul - Türkiye



+90(212) 276 57 94



www.rebi.com.tr



info@rebi.com.tr